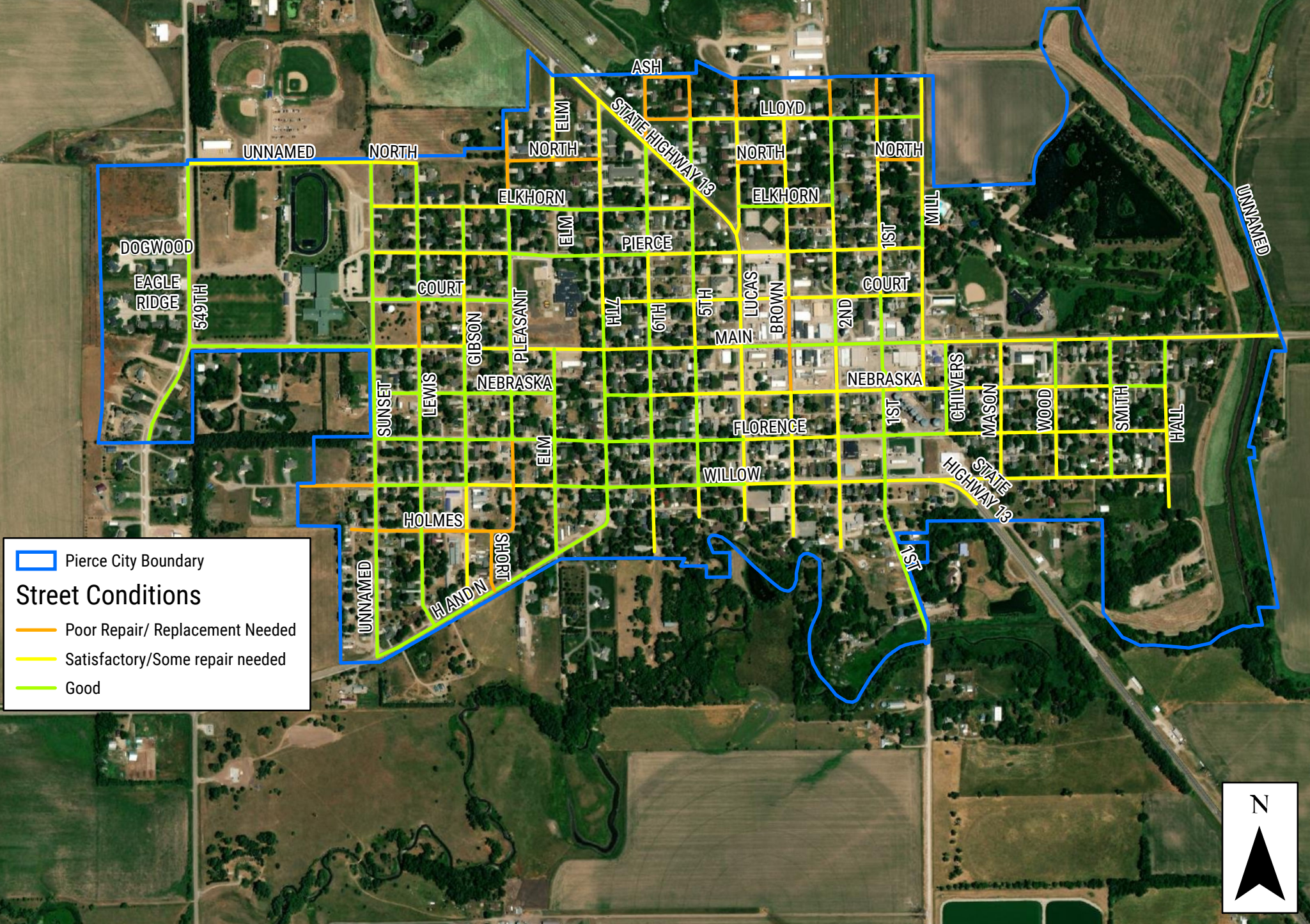






Pierce Street Conditions



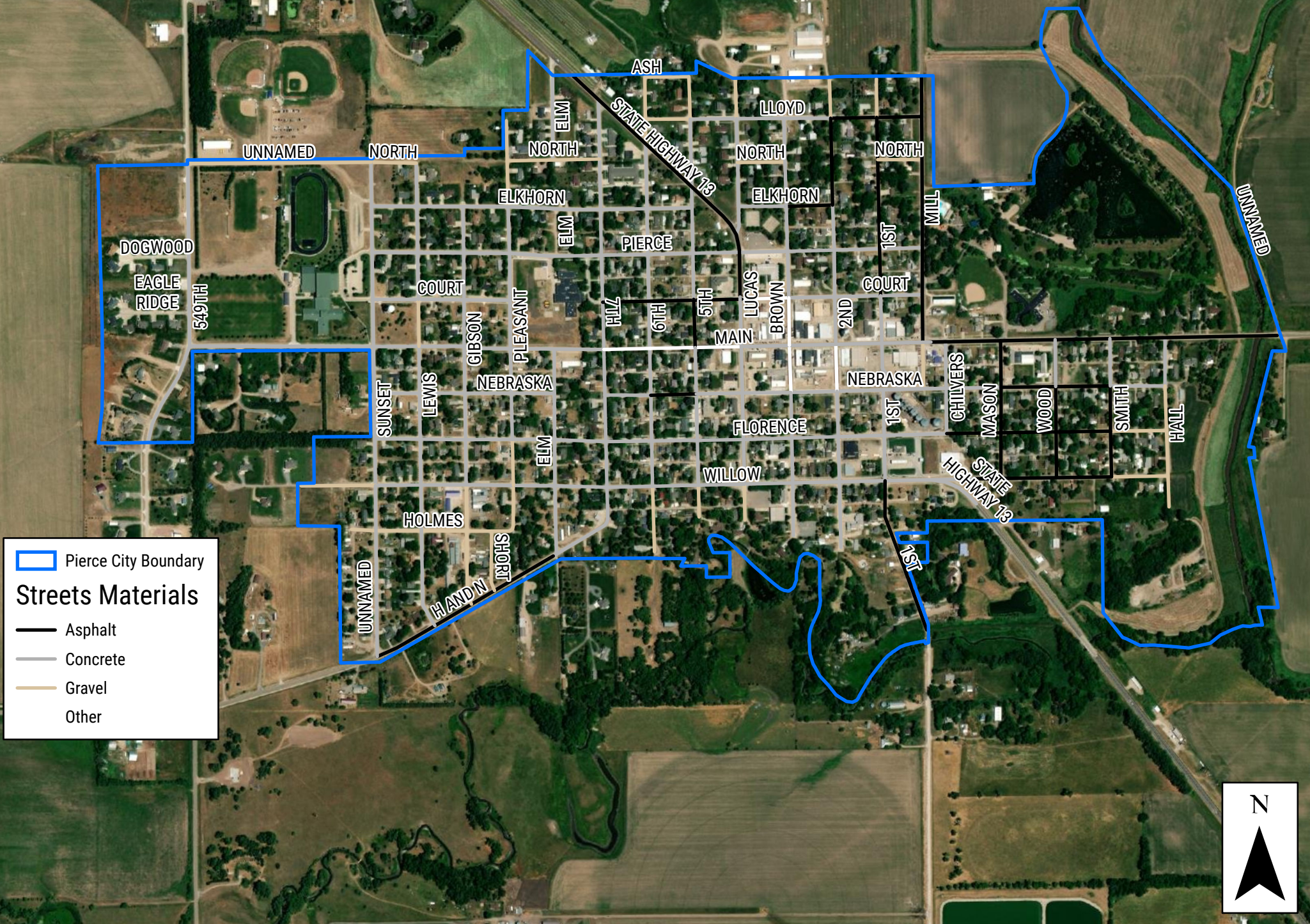
 Pierce City Boundary


Street Conditions

-  Poor Repair/ Replacement Needed
-  Satisfactory/Some repair needed
-  Good



Pierce Street Materials



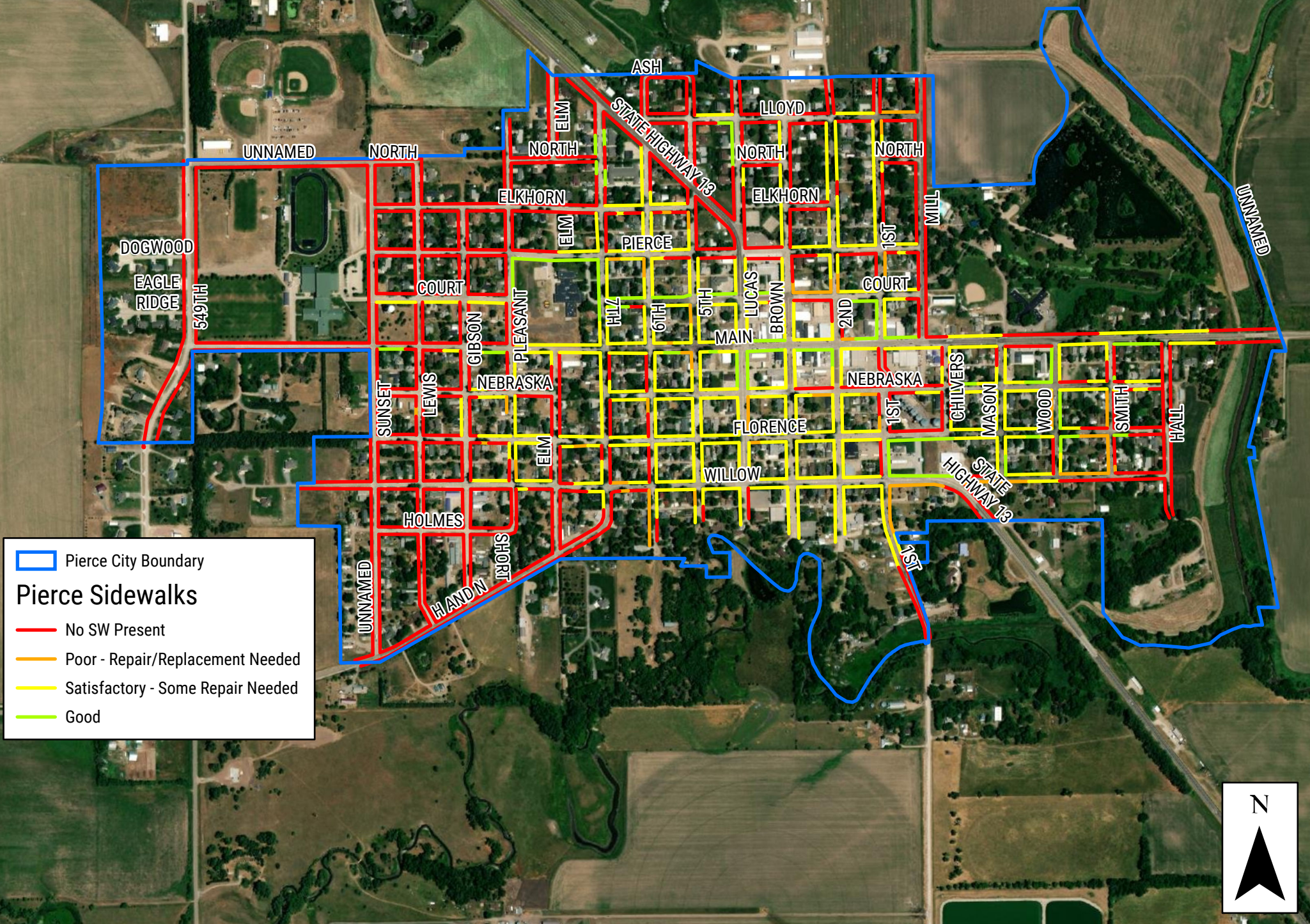
 Pierce City Boundary

Streets Materials

-  Asphalt
-  Concrete
-  Gravel
-  Other





Pierce Sidewalk Conditions



 Pierce City Boundary

Pierce Sidewalks

-  No SW Present
-  Poor - Repair/Replacement Needed
-  Satisfactory - Some Repair Needed
-  Good

